

COACHMAN[®]

garage doors

4-LAYER CONSTRUCTION



America's Favorite Garage Doors[®]



*Model CGU/CG/GD12 with ARCH3 Windows.
Shown with Sandtone Steel Base
and Standard White Composite Overlays;
Standard Spade Handles and Step Plates.*

COACHMAN[®] garage doors

Coachman[®] garage doors give your home classic elegance while complementing your home's architectural style. With four distinctive series, Coachman offers the sophisticated expression of a carriage house door with the science of durable steel and composite construction. It's the perfect blend of beauty and practicality — masterful in the details and innovative in design — and it's only from Clopay.

4-Layer Construction


intellcore[®]
insulation technology

Warmer. Quieter. Stronger.

Coachman[®] garage doors featuring Intellcore[®] insulation technology represent the ultimate smart choice for homeowners. Clopay's Intellcore[®] is a proprietary polyurethane foam that is injected into a garage door, expanding to fill the entire structure. The result is a door with incredible strength and durability. Its dense insulation also produces a quieter door, and with one of the industry's leading R-values of 18.4, it provides year-round comfort and improved energy efficiency. Smart, indeed.



Composite overlay with beveled, coped edge and center groove creates a detailed carriage house look.

CGU MODELS		CG MODELS		CD MODELS		
	2" POLYURETHANE INSULATION	R-VALUE 18.4	2" POLYSTYRENE INSULATION	R-VALUE 9.0	1 3/8" POLYSTYRENE INSULATION	R-VALUE 6.5

Calculated door section R-value is in accordance with DASMA TDS-163.



Model CGU/CG/CD11 with SQ24 Windows.
 Shown with Standard White Steel Base and
 Standard White Composite Overlays;
 Standard Spade Handles and Step Plates.

the look of WOOD the ease of STEEL

Colors

STEEL BASE DOOR COLORS



Standard White Almond Desert Tan Sandtone

COMPOSITE OVERLAY COLORS



Standard White Almond Desert Tan Sandtone

Due to the printing process, colors may vary.

- Composite overlays and steel base are available in Standard White, Almond, Desert Tan and Sandtone. Overlay and steel base colors can be mixed to achieve desired look.

- Coachman® garage doors can be painted using a high-quality exterior latex paint.

IMPORTANT: For doors being painted black and very dark colors (having an LRV of 12 or less) contact Clopay for special product. For colors having an LRV of 13 to 38 we require the use of tested and approved paints.

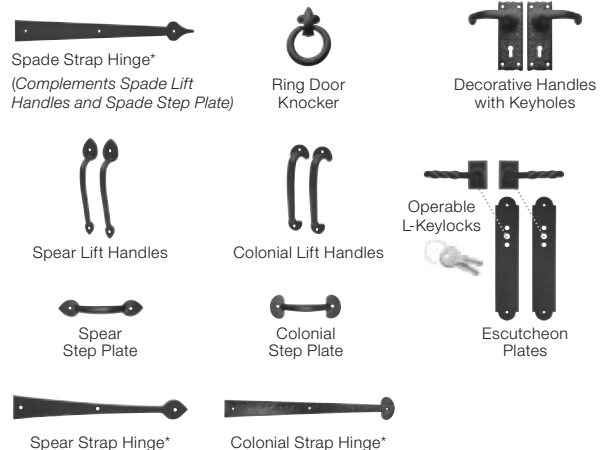
A list of pre-approved paints can be found at <http://info.garagedoors.com/lrv>

Decorative Hardware

STANDARD



OPTIONAL



**Door may not open properly if installed near the top depending on opening dimensions and lift type. See your Clopay Dealer for more details.*

Model CGU/CG/CD13 with REC14 Windows.
 Shown with Standard White Steel Base
 and Standard White Composite Overlays;
 Standard Spade Handles and Step Plates.

Series ONE

SERIES ONE of Coachman proves that in simplicity, there is sophistication. Architectural home designs such as Mission, Shaker, Country and Prairie look beautiful with the understated elegance of this classic look. Your choice of rectangular, square, arched windows or a solid top section provides that finishing touch.

SERIES ONE DESIGNS

	TOP11 (Solid)	TOP12 (Solid)	TOP13 (Solid)	ARCH1 (Solid)	ARCH1 Window	ARCH3 Window	ARCH4 Window	ARCH13 Window	ARCH14 Window	SQ23 Window	SQ24 Window	REC11 Window	REC13 Window	REC14 Window
CGU CG CD 11														

	TOP11 (Solid)	TOP12 (Solid)	TOP13 (Solid)	ARCH1 (Solid)	ARCH1 Window	ARCH3 Window	ARCH4 Window	ARCH13 Window	ARCH14 Window	SQ23 Window	SQ24 Window	REC11 Window	REC13 Window	REC14 Window
CGU CG CD 12														

	TOP11 (Solid)	TOP12 (Solid)	TOP13 (Solid)	ARCH1 (Solid)	ARCH1 Window	ARCH3 Window	ARCH4 Window	ARCH13 Window	ARCH14 Window	SQ23 Window	SQ24 Window	REC11 Window	REC13 Window	REC14 Window
CGU CG CD 13														

9' wide x 7' high; shown with Sandtone base and Standard White overlays. Consult your Clopay Dealer or clodaydoor.com for additional sizes.

Model CGU/CG/CD21 with ARCH3 Windows.
 Shown with Standard White Steel Base and
 Standard White Composite Overlays;
 Standard Spade Handles and Step Plates.



Series TWO

SERIES TWO of Coachman complements homes with American Country flair. With full or half crossbuck panels and your choice of rectangular, square or arched window styles, it's a classic style that looks as good with Irish Country Pine as it does with Texas Hill Country Chic.

SERIES TWO DESIGNS

	TOP11 (Solid)	TOP12 (Solid)	TOP13 (Solid)	ARCH1 (Solid)	ARCH1 Window	ARCH3 Window	ARCH4 Window	ARCH13 Window	ARCH14 Window	SQ23 Window	SQ24 Window	REC11 Window	REC13 Window	REC14 Window
CGU CG CD 21														

	TOP11 (Solid)	TOP12 (Solid)	TOP13 (Solid)	ARCH1 (Solid)	ARCH1 Window	ARCH3 Window	ARCH4 Window	ARCH13 Window	ARCH14 Window	SQ23 Window	SQ24 Window	REC11 Window	REC13 Window	REC14 Window
CGU CG CD 22														

	TOP11 (Solid)	TOP12 (Solid)	TOP13 (Solid)	ARCH1 (Solid)	ARCH1 Window	ARCH3 Window	ARCH4 Window	ARCH13 Window	ARCH14 Window	SQ23 Window	SQ24 Window	REC11 Window	REC13 Window	REC14 Window
CGU CG CD 23														

9' wide x 7' high; shown with Sandtone base and Standard White overlays. Consult your Clopay Dealer or clodaydoor.com for additional sizes.

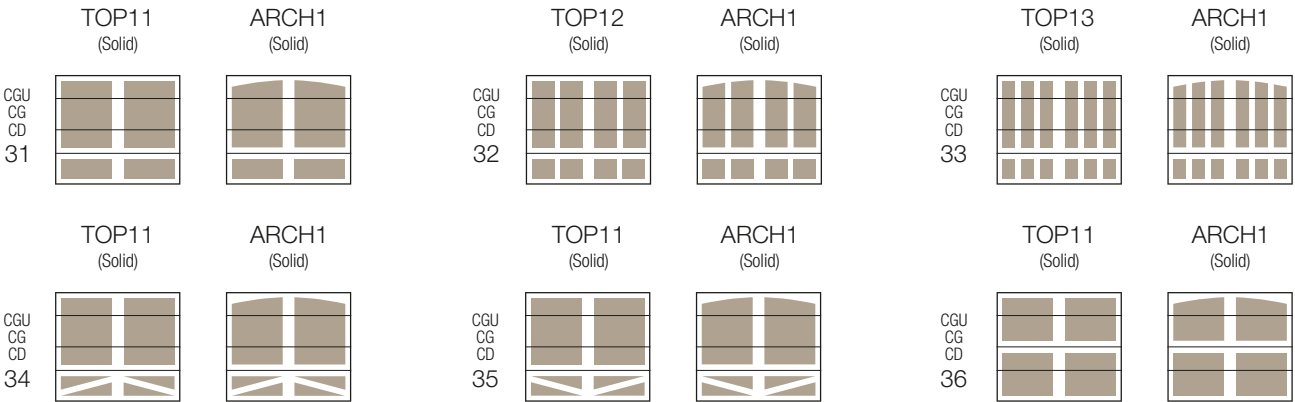
Model CGU/CG/CD31 with ARCH1 (Solid) Top Section.
 Shown with Sandtone Steel Base and
 Standard White Composite Overlays;
 Optional Spear Lift Handles and Step Plates.



Series THREE

SERIES THREE of Coachman delivers solid good looks and is designed to work exceptionally well with today's Country French and Victorian style homes. Fully enclosed to provide maximum privacy, with optional crossbuck bottom panels and square or arched top sections, this series is the architect's choice for a variety of home styles.

SERIES THREE DESIGNS



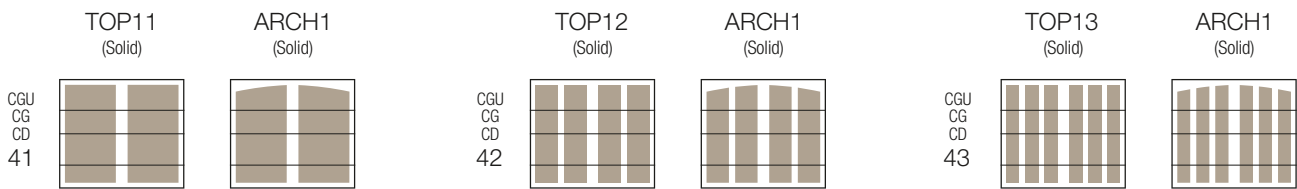
9' wide x 7' high; shown with Sandtone base and Standard White overlays. Consult your Clopay Dealer or clipaydoor.com for additional sizes.

Model CGU/CG/CD42 with TOP12 (Solid) Top Section.
Shown with Desert Tan Steel Base and Desert Tan Composite Overlays;
Optional L-Keylocks with Escutcheon Plates and
Standard Spade Step Plates.

Series FOUR

SERIES FOUR of Coachman is designed specifically for a cleaner, more contemporary look. Clean, simplistic and aesthetically pleasing designs without horizontal lines allow the garage to blend well with surrounding architecture while still retaining the hallmark carriage house appearance unique to Coachman® garage doors.

SERIES FOUR DESIGNS



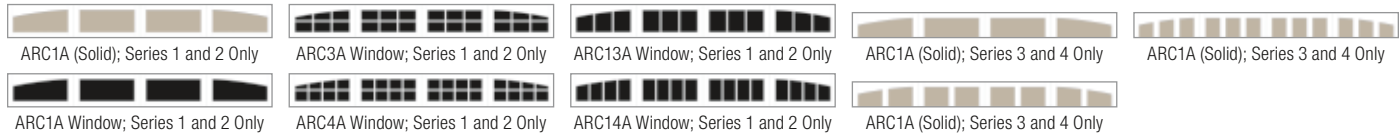
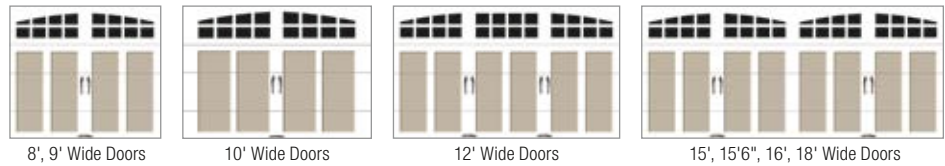
9' wide x 7' high; shown with Sandtone base and Standard White overlays. Consult your Clopay Dealer or clodaydoor.com for additional sizes.

Additional Sizes & Windows

Shown at right are common width configurations using 7' high Model CGU/CG/CD12 with ARCH4 windows as an example.

Shown below are additional window/top section options for double car doors.

To visualize on your home, go to dis.clopay.com.



Windows are available single pane or insulated in clear, frosted, seeded, obscure and rain designs.

Additional charges for optional glass apply.



Additional Features

- Standard doors available in four carriage house design series and 15 different models. Custom designs and sizes also available. See your Clopay® Dealer for details.
- Woodgrain embossed, insulated, galvanized steel base door painted front and back for a virtually maintenance-free door. See Colors.
- Windows with complete overlay and true arch designs are available in double strength or obscure glass. Models CGU/CG also available with insulated glass.
- Patented clip-in window grilles are removable for easy cleaning.
- Available with 2" Intellicore® polyurethane (R-value 18.4), 2" bonded polystyrene (R-value 9.0) or 1-3/8" bonded polystyrene (R-value 6.5) insulation and thermal break.
- 10-ball nylon rollers for quiet operation.
- Heavy-duty 14 gauge steel hinges for long-lasting performance.
- Replaceable vinyl bottom weatherseal in a corrosion-resistant retainer helps seal out the elements.
- WINDCODE®: 1-3/8" CD Models are available through W5 (single car) WINDCODE and 2" CG Models are available in W5 (double car)/W6/W8 WINDCODE. Some restrictions apply. See your Clopay Dealer for details.
- Product complies with 2015 IECC air infiltration requirement of 0.40 cfm/ft² or less (IECC, Section C402.5.2).

Warranties



Environmental Assurance

Clopay doors are compliant with environmental laws and regulations. Clopay doors do not contain HFCs. All Clopay doors are compliant with:

- California SB 1013
- New Jersey A-5583/S-3919 – Greenhouse Gas Bill
- Washington HB 1112 – Hydrofluorocarbon Greenhouse Gas Emissions
- Canadian regulations amending the ozone-depleting substances and halocarbon alternatives regulations

Size Availability

Some width and height restrictions. See your Clopay Dealer for details.

DOOR HEIGHTS	Series 1, 3 & 4	Series 2 – Design 21	Series 2 – Designs 22 & 23	
		6'0" to 16'0" in 3" increments	6'0" to 8'0" in 3" increments and 8'6", 9'0", 9'6", 10'0"	6'0" to 10'0" in 3" increments
DOOR WIDTHS	Designs 11, 12, 13, 31, 32, 33, 36, 41, 42, 43	Design 21	Designs 22 & 23	Designs 34 & 35
	Model CD 6'2", 6'4", 7'0", 7'2", 7'6", 7'8", 8'0", 8'2", 8'6", 9'0", 9'2", 10'0", 12'0", 12'2", 13'0", 13'8", 14'0", 14'2", 15'0", 15'2", 15'6", 15'8", 16'0", 16'2", 17'0", 18'0", 18'2"	6'2", 6'4", 7'0", 7'2", 7'6", 7'8", 8'0", 8'2", 8'6", 9'0", 9'2", 10'0", 12'0", 12'2", 13'0", 13'8", 14'0", 14'2", 15'0", 15'2", 15'6", 15'8", 16'0", 16'2", 17'0", 18'0", 18'2"	6'2", 6'4", 7'0", 7'2", 7'6", 7'8", 8'0", 8'2", 8'6", 9'0", 9'2", 10'0", 12'0", 12'2", 13'0", 14'2", 15'0", 15'2", 15'6", 15'8", 16'0", 16'2", 17'0", 18'0", 18'2"	6'2", 6'4", 7'0", 7'2", 7'6", 7'8", 8'0", 8'2", 8'6", 9'0", 9'2", 10'0", 14'0", 14'2", 15'0", 15'2", 15'6", 15'8", 16'0", 16'2", 17'0", 18'0", 18'2"
	Models CG & CGU 6'2", 6'4", 7'0", 7'2", 7'6", 7'8", 8'0", 8'2", 8'6", 9'0", 9'2", 10'0", 12'0", 12'2", 13'0", 13'8", 14'0", 14'2", 15'0", 15'2", 15'6", 15'8", 16'0", 16'2", 17'0", 18'0", 18'2", 19'0", 20'0"	6'2", 6'4", 7'0", 7'2", 7'6", 7'8", 8'0", 8'2", 8'6", 9'0", 9'2", 10'0", 12'0", 12'2", 13'0", 13'8", 14'0", 14'2", 15'0", 15'2", 15'6", 15'8", 16'0", 16'2", 17'0", 18'0", 18'2", 19'0", 20'0"	6'2", 6'4", 7'0", 7'2", 7'6", 7'8", 8'0", 8'2", 8'6", 9'0", 9'2", 10'0", 14'0", 14'2", 15'0", 15'2", 15'6", 15'8", 16'0", 16'2", 17'0", 18'0", 18'2", 19'0"	6'2", 6'4", 7'0", 7'2", 7'6", 7'8", 8'0", 8'2", 8'6", 9'0", 9'2", 10'0", 14'0", 14'2", 15'0", 15'2", 15'6", 15'8", 16'0", 16'2", 17'0", 18'0", 18'2", 19'0"



Visit clopaydoor.com or call 1-800-2CLOPAY (225-6729) for more information on Clopay, America's Favorite Garage Doors.

Follow us on



©2022 Clopay Corporation. All rights reserved.

RSDR-COACHSS-12_REV0822

imagine



DESIGN YOUR DOOR
OPEN CAMERA
AND POINT!